

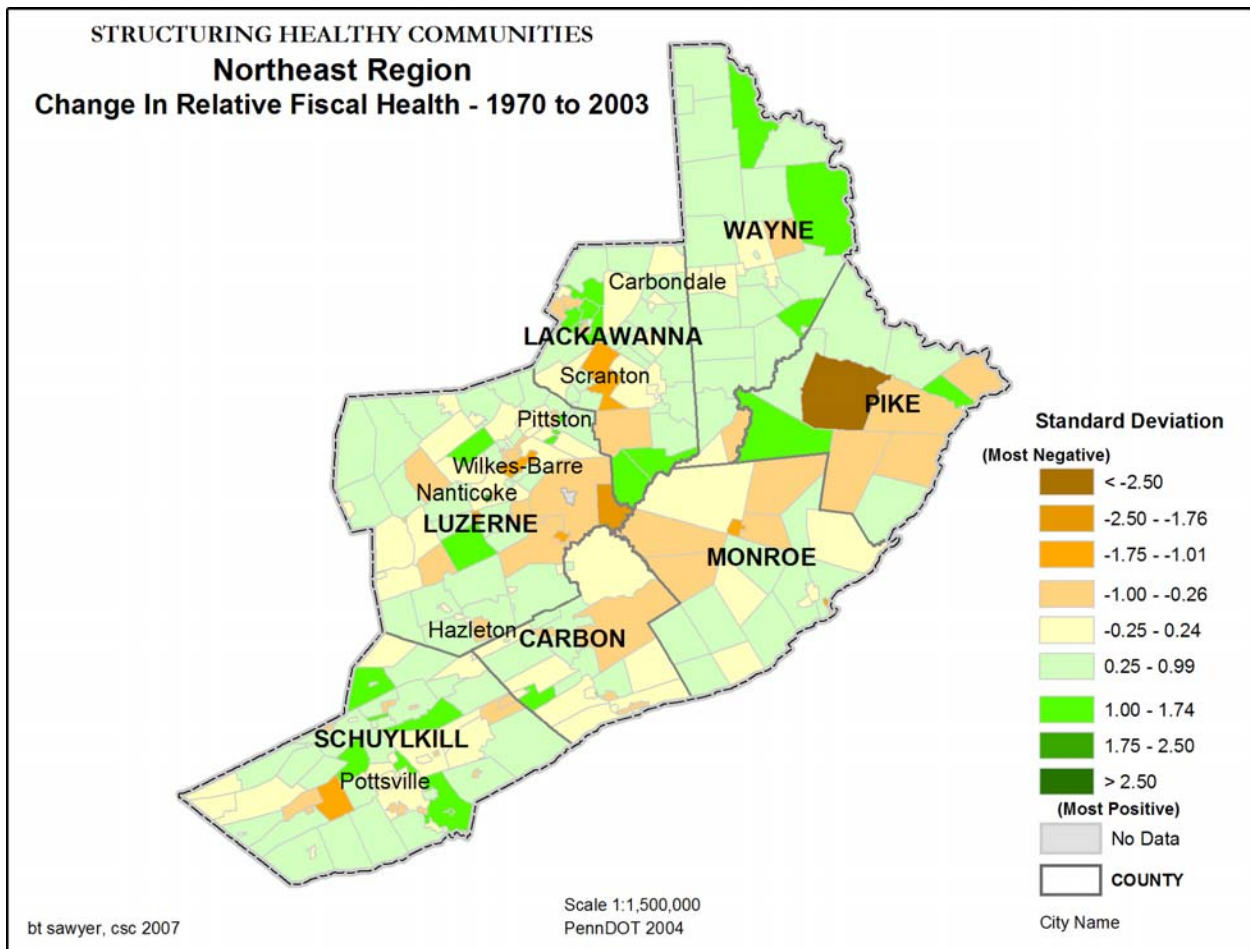
**Structuring Healthy Communities**  
**Part 1: Revenue Generation and Fiscal Health**  
 Regional Trends and Maps



Northeast Pennsylvania

The northeast region (Carbon, Lackawanna, Luzerne, Monroe, Pike, Schuylkill, and Wayne Counties) continues a pattern of high levels of fiscal stress in the most urban areas, accompanied by lower but still higher than average distress levels in many municipalities located adjacent to those cities and boroughs.

Note that municipalities closest to New Jersey and New York are gaining fiscal strength even as other municipalities closer to the urban areas are not yet sharing that increase in fiscal health. Though a significant part of the central area of this region continues to experience negative relative fiscal health, some improvement is noted.



The northeast region is unique with strong decline in the central municipalities but strong improvement in eastern parts of the region. Wayne and Pike counties are rapidly growing in population and economic health, while sections of the region to the east of Pike County and the northern part of Monroe County declining in relative wealth. While progress toward health is occurring in Lackawanna County and Luzerne County, both are still below the state average in municipal distress