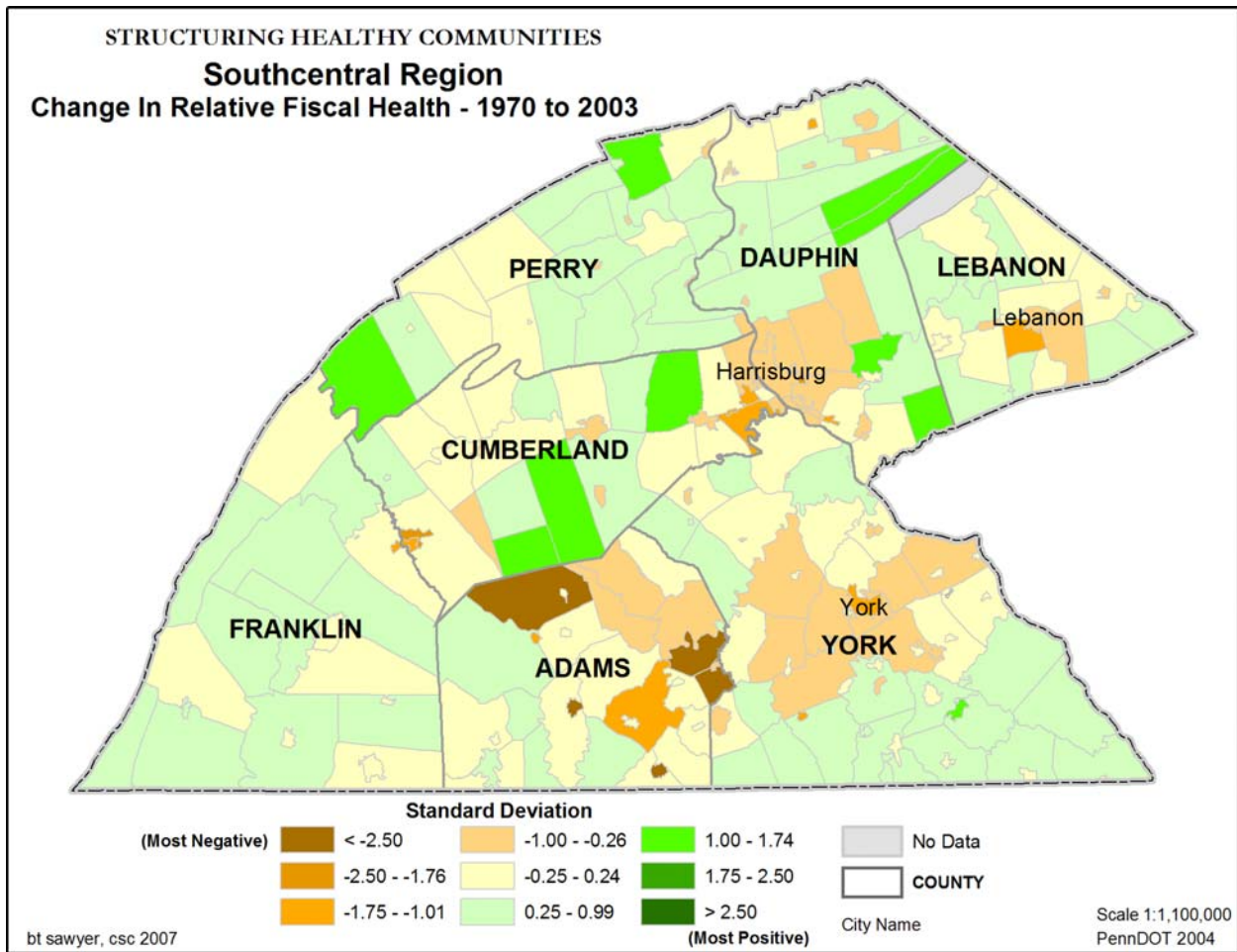


Structuring Healthy Communities
Part 1: Revenue Generation and Fiscal Health
 Regional Trends and Maps



Southcentral Pennsylvania

The southcentral region includes the counties of Adams, Cumberland, Dauphin, Franklin, Perry, Lebanon, and York. This region is characterized by comparatively high stress in rural municipalities in the northern part of the region and in cities and many boroughs throughout the region. In many ways this region serves as a sample of the entire Commonwealth. Municipalities within a reasonable distance, but usually not next to, the urban centers are in the best fiscal shape. In addition, the areas near the Maryland border in York County are doing well, probably the result of out migration from the Baltimore economic center.



Overall, the municipalities in southcentral Pennsylvania are in relatively good fiscal condition. Municipalities in four counties are fiscally healthy and improving (Franklin, Lebanon, Perry, and York); municipalities in three counties remain relatively healthy but are declining in fiscal health (Adams, Cumberland, and Dauphin). Fiscal distress centers around Harrisburg, York City, and Gettysburg).