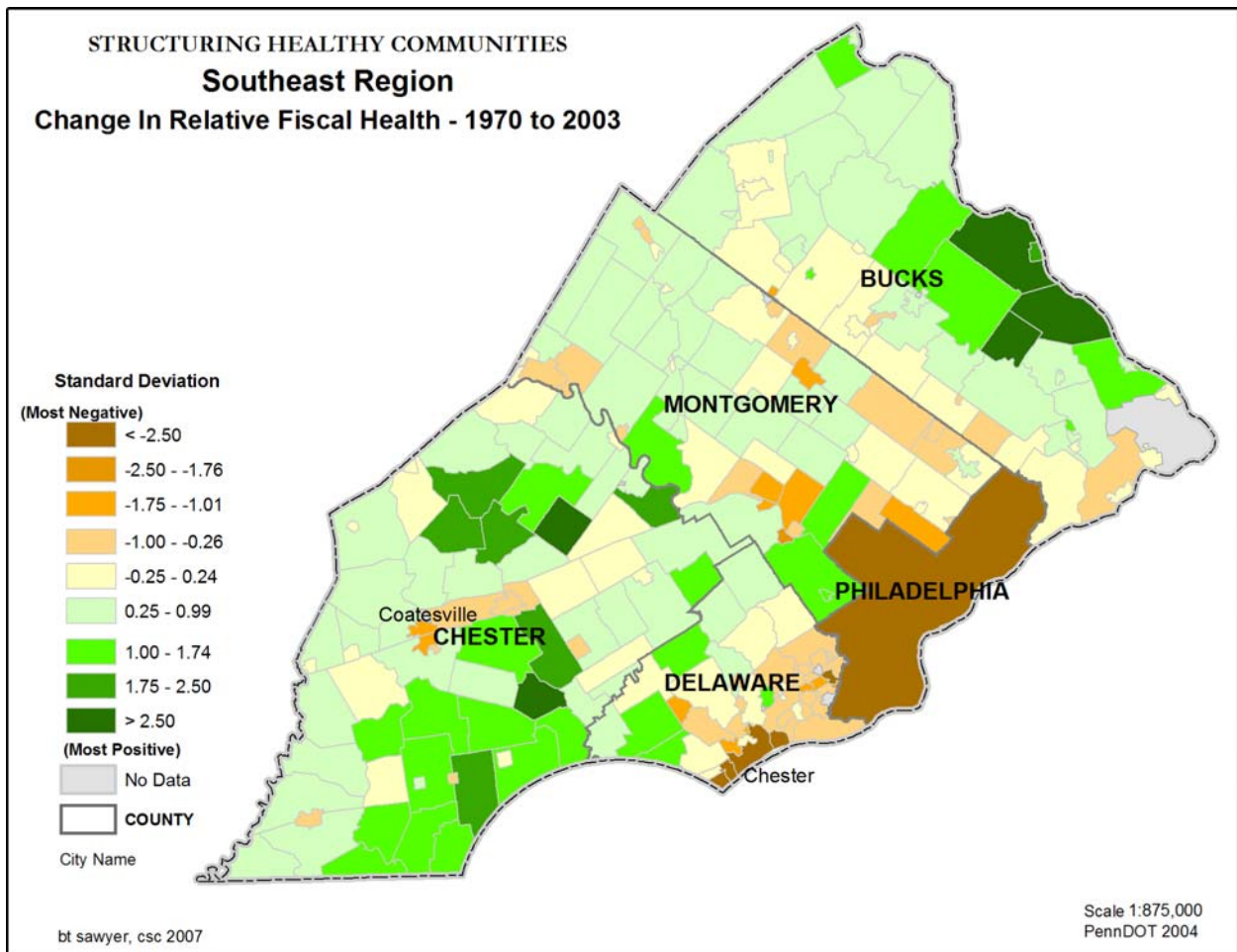


**Structuring Healthy Communities**  
**Part 1: Revenue Generation and Fiscal Health**  
 Regional Trends and Maps



*Southeast Pennsylvania*

The southeast region consists of the City of Philadelphia and its adjoining counties of Bucks, Delaware and Montgomery, as well as nearby Chester County. The pattern of relative fiscal stress in 2003 is clear: Philadelphia and many municipalities to its south in Delaware County remain the most distressed in that region – and statewide. Most of Chester, Montgomery and Bucks Counties are at the other end of the spectrum, except for a few of the older urbanized boroughs exhibiting higher levels of fiscal distress.



Most municipalities in three counties (Bucks, Chester, and Montgomery) are in good fiscal health. The most fiscally viable municipalities are townships clustered in these three counties. Philadelphia, however, continues to show signs of relative fiscal distress. Some municipalities in Delaware County are also in decline, as are several in the most southern parts of Bucks and Montgomery counties.