

# Structuring Healthy Communities

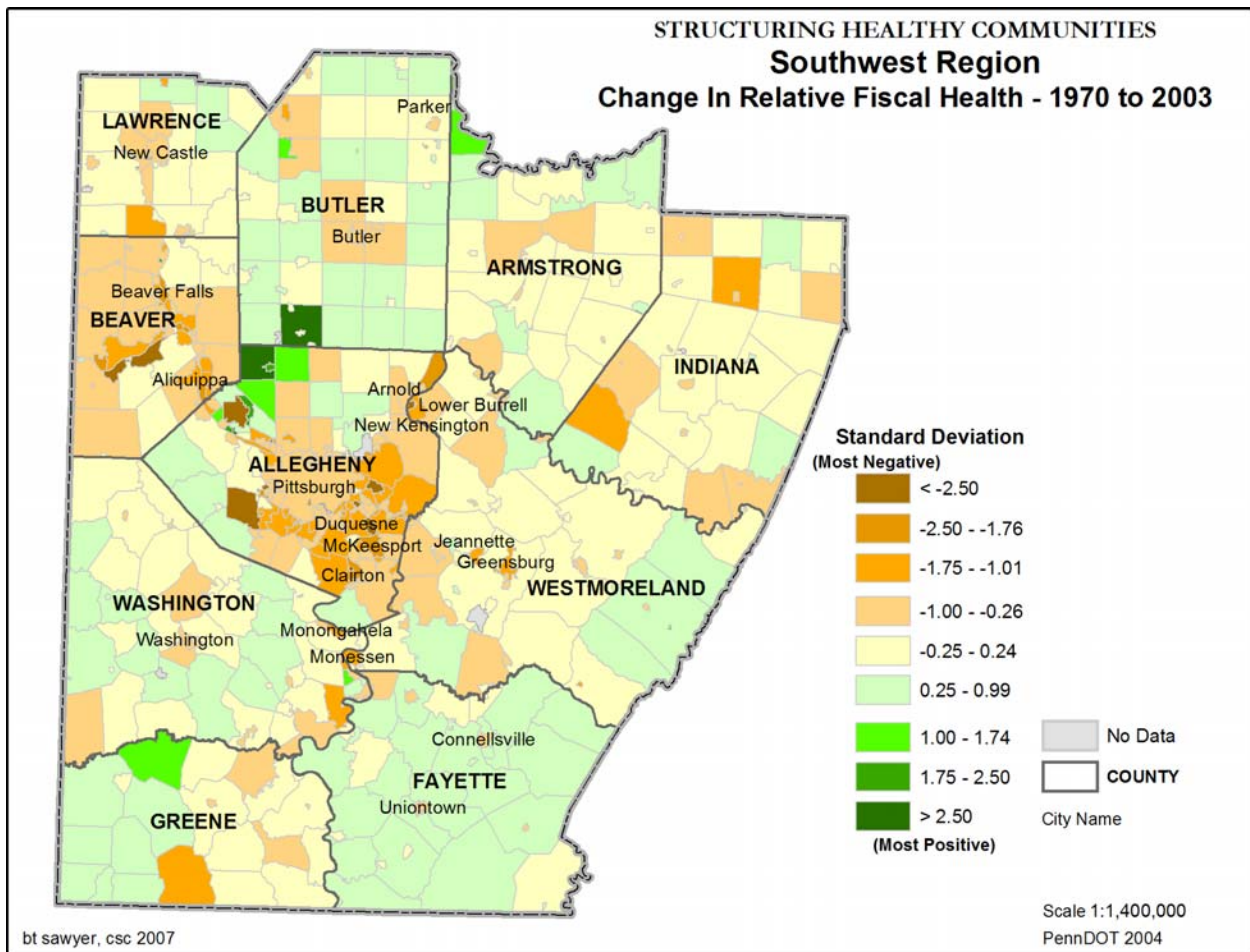
## Part 1: Revenue Generation and Fiscal Health

### Regional Trends and Maps



#### Southwest Pennsylvania

The southwest region consists of municipalities from 10 counties: Allegheny, Armstrong, Beaver, Butler, Fayette, Greene, Indiana, Lawrence, Washington and Westmoreland. There is a fairly consistent pattern of distress concentrated in and around the city of Pittsburgh. The relatively health portions of the region are located north and south of the City, close to Interstate 79.



Two counties (Allegheny and Beaver) in southwest Pennsylvania contain the Commonwealth's largest cluster of cities, boroughs and townships in relative fiscal distress. A relatively high percent of municipalities in six counties have shown a relative decline in fiscal health since 1970: Allegheny, Beaver, Indiana, Lawrence, Washington and Westmoreland. However, municipalities in Butler and Fayette Counties are demonstrating increasing fiscal health.